



Test Benches & Cleaning Machines

Reliable, clean and eco-friendly.



Universal

For all types of hoses and fittings.



Ecoline

Value driven solution for less frequent use.



Integrated Tank

Saves work space and is quiet.



P 160 Ecoline



P 160



P 250



P 300



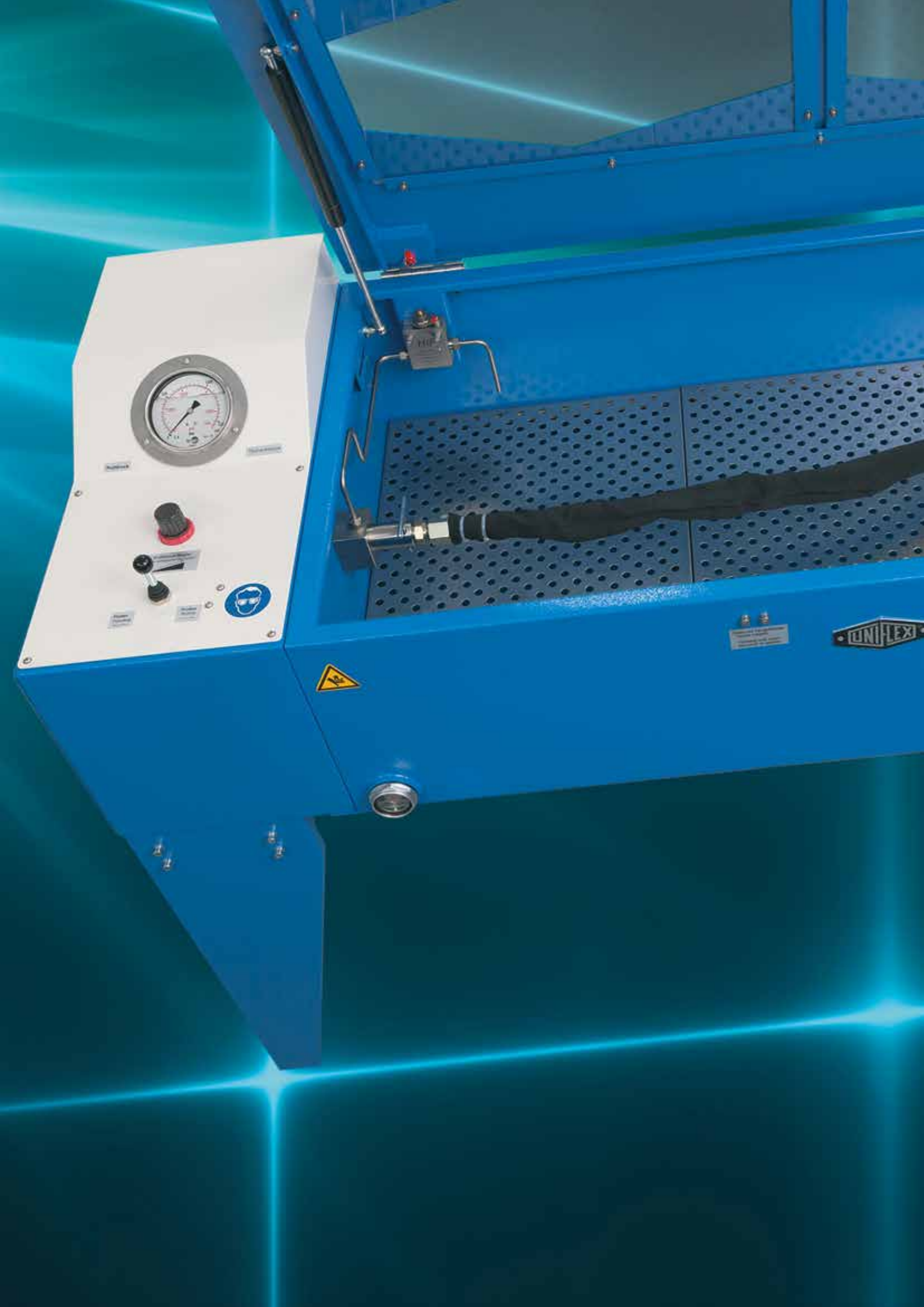
P 350



RG 2



RG 10





Hose lines that cannot withstand the high pressure for which they are designed can cause serious damage, resulting in high costs - often higher than the price of a test bench. Why take a risk that can be easily avoided?

By testing the quality of your products, you opt for safety. The P 160 or P 160 ECOLINE workshop test benches allow for the efficient and safe final inspection and testing of hose lines. They are easy to operate and quickly become part of your routine procedures.



P 160



P 160 Ecoline

Quality and safety

Fully enclosed test chamber

Also suitable for static pressure testing of various hydraulic components such as valves, hydraulic cylinders, housings, quick-release couplings, etc.

Safety valve – when the hood is opened, all pressure is automatically released within 1/10 second

Hood with gas springs and transparent Makrolon® safety pane

Environmentally friendly test medium (water-oil emulsion)

Easy and safe to operate

Test bench can be retrofitted with extension element (P 160)

Logging software/printer available as optional equipment (Control B+ Touch) (P 160)

Compressed air filter with condenser

Innovative technology for fast processing

Parts to be tested (hose lines) can be inserted quickly by means of our Steck-O-System and without any time-consuming preparation or modifications to the tank

Fast filling and automatic pressure release of tested parts

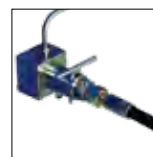
CE compliant

Hood with gas springs and transparent Makrolon® safety pane

Package

- P 160 Package/
- P 160 Ecoline Package
- Machine
- + Steck-O-Adapter metric 405.901
- + Steck-O-Adapter imperial 405.902
- + Anticorrosion additive EM CO - 18 kg

Standard



Steck-O-System

Accessories



4 Steck-O-Adapter 405.6.

We reserve the right to make technical changes without notice. Options are machine parts that can only be ordered while buying the machine.

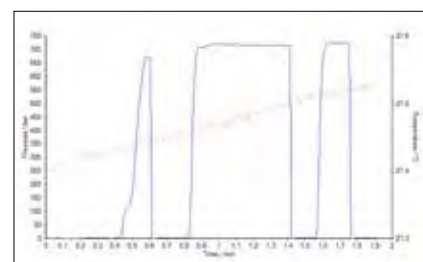


P 160 Ecoline

P 160

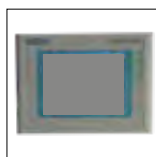
Technical data	P 160 Ecoline	P 160
Test pressure	150 - 1 300 bar	150 - 1 300 bar
Drive	Intensifier	Intensifier
Flow	1,1 L/min	1,1 L/min
Capacity	7 bar, 20 NI/min	7 bar, 20 NI/min
Tank dimensions	1 200 x 600 x 250 mm	1 590 x 795 x 370 mm
Test bench dimensions	1 400 x 600 x 1 200 mm	2 210 x 950 x 1 325 mm
Reservoir capacity	33 L	100 L
Alternative drive only with pre filling pump 405.904/405.914	-	0,38 kW, 400V 50Hz 3Ph
Colour	RAL 5012 Blue	RAL 5012 Blue, RAL 7021 Grey
Weight	120 kg empty	210 kg empty
Noise level	72 dBA	72 dBA
Accessories		
Suction filter	✓	✓
Air preparation unit	✓	✓
Steck-O-Adapter (s-series only)	DN 4/6/8/10/12/ G 1/2" 405.901	DN 4/6/8/10/12/ G 1/2" 405.901
Steck-O-Adapter (s-series only)	R 1/4"/ 3/8"/ 1/2"/ 3/4"/ G 1/2" 405.902	R 1/4"/ 3/8"/ 1/2"/ 3/4"/ G 1/2" 405.902
Anticorrosion additive	EM 10 I	EM 10 I
Options		
High pressure* (Steck-O-System not available)	-	150 - 3 000 bar
Low pressure*	-	20 - 1 300 bar

* Only one of the two options possible.



UPP Protokoll

Options



CONTROL B + Touch (only for P 160)



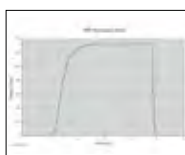
The P 160 is also available in stainless steel



P 160 extension element
407.3150: Total chamber length 3600 mm
407.3250: Total chamber length 4400 mm



UPP Pressure Sensor for test benches.



Additional Information



Steck-O-System:

- Clean, quick and reliable connection
- Push-in system for easy assembly
- Ample space in chamber
- Adapter for fast connection



The P 250 Test Bench with Control C.2 IPC is a new modular test bench that can be adapted to your needs. It offers the possibility to test with Steck-o, Hand or Hydraulic quick cone system. You can also install a Euro Pallet inside. The Chamber also accepts a non-end extension if you prefer to test a hose lengthwise. The controller offers all parameters for a fully automatic test, with visualization of the pressure and may other features but also connectivity to your server or other machine in line with industry 4.0.



P 250

Quality and safety

- Fully enclosed test chamber
- Also suitable for static pressure testing of various hydraulic components such as valves, hydraulic cylinders, housings, quick-release couplings, etc.
- Safety switch - when the hood is opened, all pressure is automatically released within 1/10 second
- Environmentally friendly test medium (water-oil emulsion)
- Easy and safe to operate
- Quick changeover between automated and manual setup mode
- Test bench can be retrofitted with extension element
- Up to 120 tests per hour for a max. length of 2500 mm (DN 12-800 mm)

Innovative documentation management

- Time-saving product parameter memory
- Proper documentation and controlling
- Test reports printed on printer (optional)

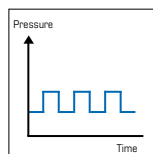
CE compliant

- Hood with gas springs and transparent Makrolon® safety pane

We reserve the right to make technical changes without notice. Options are machine parts that can only be ordered while buying the machine.

Package

- P 250 Machine
- + Steck-O-Adapter 414.1000
- + Anticorrosion additive EM CO - 18 kg



Dynamic test.



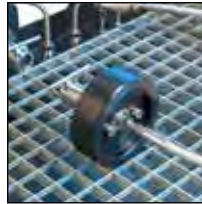
Steck-O-4 Fach



Hand clamping cone



P 250

**Steck-O adapter and screw connection:**

1 x Steck-O up to 1500 bar:	414.1000
4 x Steck-O up to 1500 bar:	414.1012
1 x Screw connection up to 1500 bar:	414.1001
4 x Screw connection up to 1500 bar:	414.1011
1 x Screw connection up to 3000 bar:	414.1008
4 x Screw connection up to 3000 bar:	414.1013

**Fast clamping system:**

1 x Hand clamping cone up to 1500 bar:	414.1002
3 x Hand clamping cone up to 1500 bar:	414.1032
1 x Hand clamping cone up to 3000 bar:	414.1005
3 x Hand clamping cone up to 3000 bar:	414.1035
1 x Hydraulic clamping cone up to 1500 bar:	414.1003
3 x Hydraulic clamping cone up to 1500 bar:	414.1033
1 x Hydraulic clamping cone up to 3000 bar:	414.1004
3 x Hydraulic clamping cone up to 3000 bar:	414.1034

Technical data	P 250
Test pressure	150 - 1 500 bar
Control	C.2 IPC
Drive	Intensifier
Flow rate (effectively)	7,5 L/min
Air supply	7 bar, 60 NI/min
Tank dimensions	2 194 x 890 x 470 mm
Test bench dimensions	2 700 x 1 450 x 1 550 mm
Reservoir capacity	120 L
Loading	250 kg
Weight	570 kg
Noise level	75 dBA
Electrical connection	3~VAC
Options	
High pressure	150 - 3 000 bar
Low pressure	20 - 3 000 bar
Stainless steel tank	✓
Extended version on request L x W x H (mm) Weight	2 220 x 1 000 x 1 400 420 kg

**Tank Extension n°: 414.2100.0**

Extension kit 1 x Steck-O:	414.1290
Extension kit 1 x Screw connection up to 1500 bar:	414.1290
Extension kit 1 x Screw connection up to 3000 bar:	414.1208
Extension kit 1 x Hand clamping cone up to 1500 bar:	414.1202
Extension kit 3 x Hand clamping cone up to 1500 bar:	414.1232
Extension kit 1 x Hand clamping cone up to 3000 bar:	414.1205
Extension kit 3 x Hand clamping cone up to 3000 bar:	414.1235
Extension kit 1 x Hydraulic clamping cone up to 1500 bar:	414.1203
Extension kit 3 x Hydraulic clamping cone up to 1500 bar:	414.1233
Extension kit 1 x Hydraulic clamping cone up to 3000 bar:	414.1204
Extension kit 3 x Hydraulic clamping cone up to 3000 bar:	414.1234



Hand quick cone system



Hydraulic quick cone system

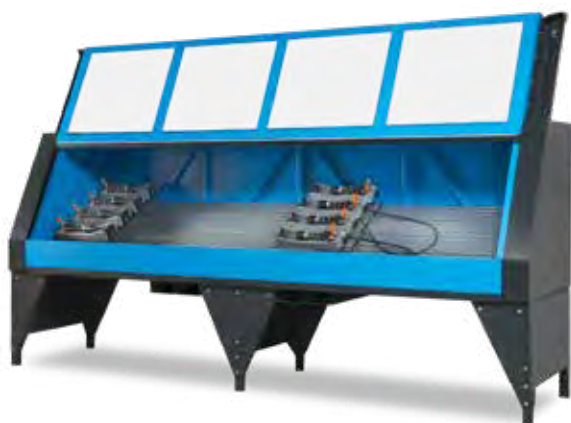


Different cones

Extension of quick system
to 3 linesBarcode Scanner
BCR CTR2C-Kit



With the P 300, you can perform precision tests of hoses of up to 2 500 mm in length and with pressures up to 1 000 bar. Test up to 120 hoses per hour, making use of 4 parallel test lines and our quick-clamping system. You can choose between automated and manual setup mode. Our P 350 test bench unifies our years of experience with your advanced requirements for special hose equipment. The extra-large test chamber gives you the space you need for your challenge. Pallets with hoses as well as large, heavy hose coils can be easily supplied to the chamber by forklift. Hose samples are connected easily with adapter hose and quick connection to pressure ports.



P 300



P 300 Aggregate



P 350

Innovation and quality

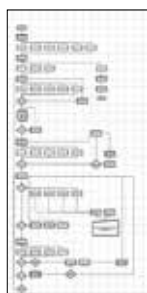
- 4 parallel test lines
- Combination of two test chambers (mirror arrangement) (optional)
- Fast workflow thanks to separately running test chambers (for alternate setup and testing)
- Quick-clamping system holding up to 4 hoses for parallel testing with customized settings
- Internal lighting system, adjustable machine feet and top-quality internal gear pump
- Quick changeover between automated and manual setup mode
- Separate portable power aggregate (with 2 m connecting hoses)
- Max. hose length 2500 mm

Safety and CE conformity

- Automatic closing of test chamber (P 300)
- Large inspection window made with transparent Makrolon®
- Display for bubble-free flooding on aggregate
- Customisable test logs and reports (for storage and printing)

We reserve the right to make technical changes without notice. Options are machine parts that can only be ordered while buying the machine.

Control C.2: Accessories



Customized software



Barcode scanner

Options



P 300 Aggregate - 2 NVA Control Unit for two test chambers



- 409.1 Deventilation of residual pressure
- 409.2 Manual door closing for tight circuit
- 409.3 Low pressure 50-1000 bar

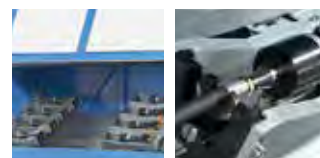


P 300



P 350

Technical data	P 300	P 350	Standard P 300
Test pressure	150 - 1 000 bar	150 - 1 000 bar	Sealing cone set
Control	C.2 IPC	C.2 IPC	USB interface/port
Drive	Diaphragm pump + Intensifier	Diaphragm pump + Intensifier	Pressure filter 12 µm
Flow rate (effectively)	5 L/min	12.5 L/min	Return filter 12 µm
Tank dimensions open/ closed	3 750 x 2 400 x 870 mm/ 3 750 x 1 450 x 870 mm	P 350 Container: External: 2 100 x 2 170 x 2 650 mm Internal: 1 950 x 1 950 x 2 200 mm P 350_Chamber-3 600: External: 4 100 x 950 x 1 325 mm Internal: 3 600 x 795 x 370 mm	Compressed air maintenance unit
Aggregate dimensions	830 x 740 x 1 340 mm	850 x 1 390 x 810 mm	Standard P 350
Reservoir capacity	120 L	P 350 Container: 1040 L, P 350_Chamber-3600: 330 L	Quick connector set (SSKV)
Colour	RAL 5012 Blue, RAL 7021 Grey	RAL 5012 blue/RAL 7021 grey/RAL 9002 grey-white	Automatic pressure control
Weight of tank	1 000 kg (empty)	P 350 Container: 650 kg P 350_Chamber-3 600: 390 kg	Pressure filter 5 µm
Weight of power unit	210 kg (empty)	210 kg	Suction filter 100 µm
Noise level	75 dBA	75 dBA	Anticorrosion additive EM 10 L
Max. hose length	up to 2 500 mm		Fluid flow inspection glass
Test medium	Water-oil emulsion EM CO-18 kg	Water-oil emulsion EM CO-18 kg	Integrated tank
Accessories			
Pressure + return filter	✓	✓	
Air preparation unit	✓	✓	
Sealing cone set	✓	✓	
Options			
Second chambers are possible	✓	✓	



2 clamping discs per head, catering to various diameters (OD 8-42 mm).

For hose assembly up to DN19 (3/4").
Other sizes on demand.

Additional Information



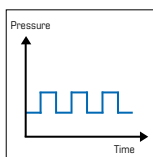
Sealing cone set (standard), DN 2.5 - 22mm, 6 cones.



The height of the P 300 can be adjusted.



Axially adjustable quick-change system with adjustable rotating head.



Dynamic test.

- Rapid hose clamping system for the admission of up to four hoses with simultaneous checking (variable setting)
- Parallel test lines – four test lines per chamber
- Automatic starting of the given pressure values
- Two test chambers are possible – mirroring (one is loaded while a second chamber is testing)
- Test chamber standard size 3600 mm
- Depending on different factors (flooding time, length + diameter of the hoses) you can test approx. 120 hoses per hour
- Adjustable height
- Fitting cones 3/4" (DN 2,5 – 22 mm) easy to change via simple unlinking (6 different cone sizes are available in standard package)



UNIFLEX cleaning machines effectively remove residue and scale from hose cutting, crimping and press fitting.



RG 10



RG 2

We reserve the right to make technical changes without notice. Options are machine parts that can only be ordered while buying the machine.

Package

RG 10 or RG 2
 Hakapur 21,5 L Cleaning Agent
 Flushing Cone Ø 4 and Ø 8 mm (0,15" and 0,31")

Accessories



Flushing cone
 SK 3802.4
 Ø 2 mm (0,08")



Suction filter
 400.031: RG2
 UJ_30.10.02: RG10



Pressure filter
 600.901 5 µm

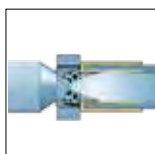


RG 2



RG 10

Technical data	RG 2	RG 10
Drive	Diaphragm pump, 7 bar Air	Diaphragm pump, 7 bar Air
Maximum flow rate	25 l/min	180 l/min
Pressure filter	5 µm	10 µm
Air filter	5 µm	5 µm
Max. air consumption	100 NI/min	250 NI/min
Working range	up to 1¼" ID	up to 2" ID
Max. length, depending on bore size	2,5 m/8 feet	20 m/65 feet
Tank capacity	38 L	215 L
Working area	350 x 750	800 x 1 600
Cleaning agent	Non-toxic and corrosion-free emulsion, water based.	Non-toxic and corrosion-free emulsion, water based.
L x W x H (mm)	960 x 435 x 940	2 000 x 840 x 1 050
Weight (empty)	55 kg	160 kg
Accessories		
Hakapur 21,5 L - RG 2+RG 10 - concentrated cleaning agent		
PJ_30.10.76 - RG 10 - Filter cartridge 5 µm		
PJ_30.10.60 - RG 10 - Filter cartridge 10 µm		
600.4 - RG 2 - Filter cartridge 5 µm		
600.5 - RG 2 - Filter cartridge 12 µm		



UNIFLEX cleaning machines effectively remove residue and scale from hose cutting, crimping and press fitting.



www.uxinside.net

Training and Certification.

Promote Quality!

Registration

UNIFLEX-Hydraulik GmbH Department:
Service and Training

E-Mail: training@uniflex.de
www.uxinside.net

Online Registration
via QR-Code



Specialist workshop for hose assembling

UNIFLEX.de
made in Germany

UXInside

Assembling hose and fittings with safety as priority No. 1



TRAINING CONCEPT

Advanced training is an important investment in the future of a company in order to maintain or enhance quality and safety. As a supplier of machinery for production of hose assemblies, we are continuously extending our product range to meet the requirements of the market. Furthermore, we supply the appropriate material to our customers and we offer training courses, which qualify for production of hose assemblies meeting the high requirements regarding safety and quality. First-Class skilled personnel with expert know-how provide decisive competitive advantages. The production of hose assemblies with the best machines available on the global market ensures quality and safety.

TRAINING

Interesting to know

In 2016, we commissioned a market study showing the following interesting results:

Many manufacturers of hose assemblies are using targeted trainings and practical trainings for the advanced training of their employees.

But only approximately 23% of the employees of those companies are qualified regarding hoses, even though 76.3% of all customers suppose that their supplier has properly trained personnel!

1. HOSE ASSEMBLING

Theory and practice

Target Group

Manufacturers of hydraulic hose assemblies, using UNIFLEX machinery for production. Employees of the hose assembly department, quality control, maintenance and sales departments.

Theory

The participants acquire basic knowledge about

- Types of hose selection
- Rubber and thermoplastic hoses
- International standards and regulations
- Storage and storage periods of hose
- Hose fittings and connection forms

Practice

- Production of hose assemblies with UNIFLEX machines
- Cutting hose
- Marking of hose fittings
- Skiving, internal and external
- Crimping with production and service crimpers
- Cleaning and inspection of the hose assemblies

93.2% of all customers expect technical recommendations from their hose supplier.

42.5% of the customers believe that sales growth is associated with the requirement to train the customers regarding quality.

23.7% have a vocational education in hydraulics or fluid technology.

Only 10.2% believe that training is not the decisive factor for purchasing a machine, only the price.

2. MACHINE MAINTENANCE

Maintenance and repair of UNIFLEX machines

The participants acquire basic knowledge about the functioning of the machines, their maintenance and repair.

Practice

All types of machine maintenance work is carried out by our experienced service staff.

Duration of training

2 days: Day 1 – basics of hose assembling, theory and practice
Day 2 – machine maintenance

maximum 8 persons per course

Start: 09:00 h

Cost

Each participant 795,00 €/p.P.

The participation fee includes refreshments, lunch and course materials.

Info and Inscriptions

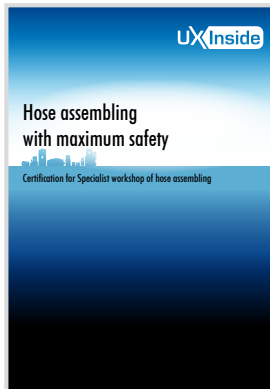
www.uxinside.net

Experience the Value using UNIFLEX Machines! Share it with your Customer.

UNIFLEX Machine + Certification

+ Training
Your service and sales team.

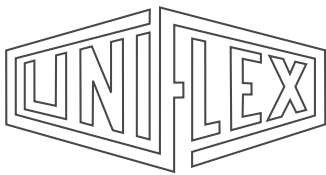
+ ULS
(UxInside Label)



= Workshop certified.



PROMOTE QUALITY!



UNIFLEX Special Innovations

– often copied, never matched!



We reserve the right to make technical changes without notice. Based on the customer-specific hose line system the working range of the machines may vary.

Where we are and how to reach us.



GERMANY

UNIFLEX-Hydraulik GmbH
Robert-Bosch-Strasse 50-52
61184 Karben/Germany

+49 60 399 171 0
+49 60 399 171 181
+49 174 7641 526
sales@uniflex.de

USA

UNIFLEX of America LLC
1088 National Parkway
60173 Schaumburg, IL/USA

+1 847 519 11 00
+1 847 519 11 04
sales@uniflex.de

URUGUAY

UNIFLEX Latin America Srl
Saint Bois 5074
Free zone Stock
Montevideo, UY 12000/Uruguay

+598 2 7120 660 ext. 1115
+598 2 7120 660 ext. 2101
sales@uniflex.de

INDIA

UNIFLEX Hose Assembly Machines
India Pvt. Ltd.
Thigallarpalya Main Road #4
52/3A 1st Cross Peenya 2nd stage
560058 Bangalore/India

+91 80 28368634
+91 80 28368634
sales@uniflex.de

CHINA

UNIFLEX-Hydraulik Trading
(Shanghai) Co.
South 2 Warehouse, Building 1
No. 500 Jianyun Road
Zhoupu Town, Pudong New Area
Shanghai CN 201318/China

+86 21 5032 7022
sales@uniflex.de

SINGAPORE

UNIFLEX-Hydraulik
Asia Pacific Pte. Ltd.
No. 51 Bukit Batok Crescent #07-25
658077 Singapore

+65 68 96 67 95
+65 68 96 64 28
sales@uniflex.de

JAPAN

UNIFLEX JAPAN
Representative office
1-20-3 Nishishinjuku, Shinjuku-ku
8F, Nishishinjuku Takagi Bldg.
Tokyo, JP 160-0023
Japan

+81 3 6890 3386
sales@uniflex.de

RUSSIA

Via partner company:
Hydraulics-Engineering-Services LLC
Ryabinina 31, Entrance 182
620149 Yekaterinburg
Sverdlovsk Oblast
Russian Federation

+7 343 227 88 83
sales@uniflex.de