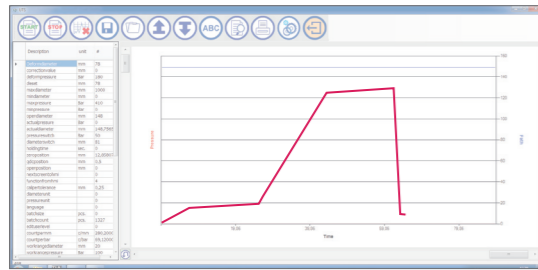


# CONTROL C

## OPTION (ex works)

PFC Pressure Force Control



The UNIFLEX PFC (PressureForceControl) option offers two ways to stop a compression – based on the distance travelled or else the applied force, as occurs with PFC. Shutdown due to the applied force is much more sensitive because here, material behaviour is taken into account. Thus also makes it possible to press brittle materials, such as fibre glass. Some well-known insulator producers are already using PFC profitably. How can you also benefit from PFC in your production?

PFC provides readings of pressing power and pressing position at any time during the pressing process. These measurements are revealed and analysed in a graph. You will

learn exactly how this pressing process can be performed perfectly on the basis of a few test pressings. This allows you to set the applied pressing force, the rate of pressure increase and the switch-off time for this pressing process during the further production. This means that the highest quality of your products is guaranteed - durably, independent of the user, and reproducibly! One practical example from insulator production: The usual procedure for determining the compression parameter is the empirical study of a pressing process with the help of the Uniflex Transfer System (UTS) software: With a flat ramp, a pressing process is carried out with a slightly increased pressing force. The pressure at which the glass fibre rod is broken can be determined by analyzing the graph obtained. A pressing force reduced by the manufacturing tolerance can be used as working pressure during production.

## Other options:

Order number:  
Schaltschrank XXL



For optional components.

Bestellnummer: 807.852



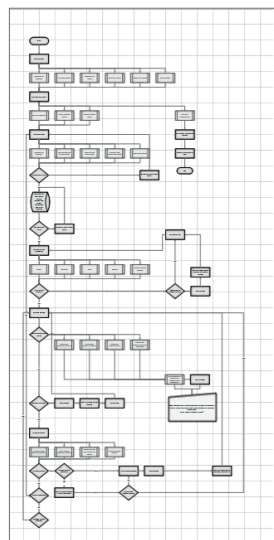
UX TOUCH+with UH front - + 1800mm cord

Bestellnummer: 807.496



TOUCH - without UH front - + 1800mm cord

## CORPORATE PROGRAMMING as a SPECIAL SOLUTION (ex works)



Allows process-driven production

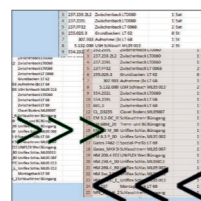
You would like to have your own individual control setting or a visually coordinated configuration on your user interface in line with your company's CI. Simply compile your own company solution from the variety of menus, interfaces and options offered, and adapt them as you desire, just like our customers EATON, CATERPILLAR, Intertraco, etc.

Paperless communication:



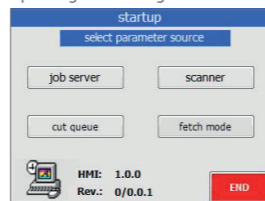
Communication from server or machine. Order management via server

XML/CSV interface:



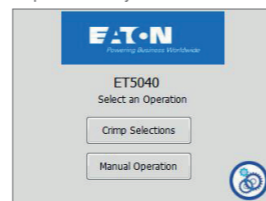
External database connection. Allows you to retrieve and save the documented production data.

Operating mode configurations:



Communication with the server or with other machines

Topics customized in line with corporate identity:



CI-compliant menus



## Production management for serial production, production in line with your own processes

- Endless article memory
- Data set filtering for faster production
- Data sets can be read in via scanner
- Linking of the scanner menus to your production data set
- Intuitive operation

## Service via network

- Simple organization of changes, maintenance and management of the production data sets
- Central order management from the desktop saves time and money

## Upload and download of data

- Easy upload and download of data using HID-compliant devices, with a variety of possibilities such as external database, scanners, USB flash drive, Vernier calipers or remotely via the Internet

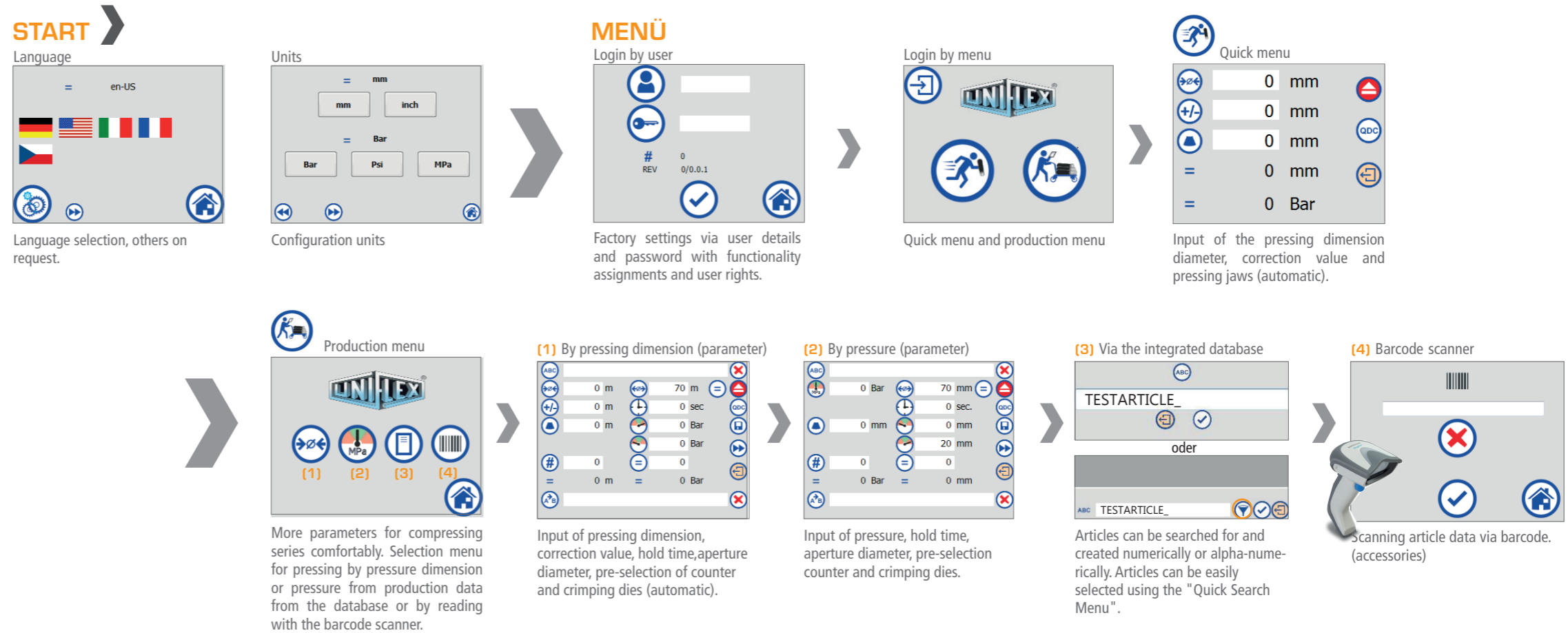


# CONTROL C



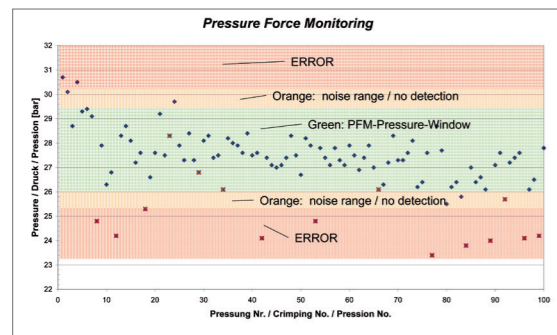
## STANDARD CONTROLS

- Display: 6" real-time touch display in colour (16.7 million colours)
- PFD Pressure Force Display
- Subsequent pressing dimensions
- Variable switching point, pressure/displacement
- HID-compliant ports (USB - Ethernet)
- Dimensions (L x W x H): 220 x 220 x 280 mm
- Weight: 6 kg



## ACCESSORIES (can be retrofitted at any time)

Order number: PFM



**PFM - Pressure Force Measuring**  
Quality-enhancing option in the series production context. With PFM, the upper and lower pressure limits can be set by adjusting the tolerance values obtained from a test pressing. Pressures outside these limits are output as errors. Optionally, the pressure can also be switched off when the upper or lower diameter is reached. This increases your process reliability.

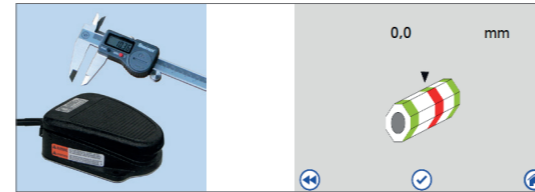
This way you can display and record combinations of wrong hose and fittings, skipped work stages such possible peeling of hose or a poorly positioned hose-fitting connection. It offers integrated quality control without any additional effort.

Order number: UTS Ctrl C package or separately available:  
UTS Ctrl C + Notebook 807.351



**UTS UNIFLEX Transfer Software + Notebook**  
Allows the reading and output of produced data or measured data (including time stamps) for a complete production and documentation. The ability to block the machine's user interface against erroneous input increases the transparency of the production process.

Order number: Kit of 800.610 + 800.606 / Caliper CTRL C 3 inch  
Or Kit of 800.610 + 800.609 / Caliper CTRL C 4 inch



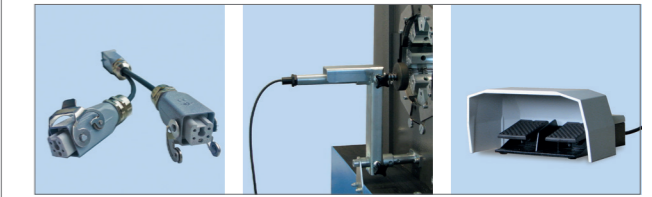
**Measuring point menu with foot mouse / Vernier caliper (3" or 4"):** Quality testing using calipers and foot mouse (as OK button) With the digital calipers, you can also check the pressing dimensions for conicity and ovality (number of measurement points). The pictogram-driven menu control guides you through the entire process.

Order number: Calp Ctrl C (software +hardware)



The simple calibration of your machine by means of digital measurement via the software and the calibration mandrel.

Order number: Combi Adapter + TA(A) 800.611



Combi adapter depth stop double footswitch

Order number: BCR Ctrl C



Barcode scanning

Order number: 800.610



Foot mouse as a separate acknowledgement button