

Special Equipment

Solutions for every requirement.



Universal

For all types of hoses and fittings.



Greaseless

Slide bearings on the crimp tool improve efficiency up to 20%, reduce friction and help keep the tool free of contaminants.



Engineered to last



KS 6 | KS 8 | KS 10



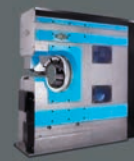
HMC 1-25 | HMC 1-30



HM 245



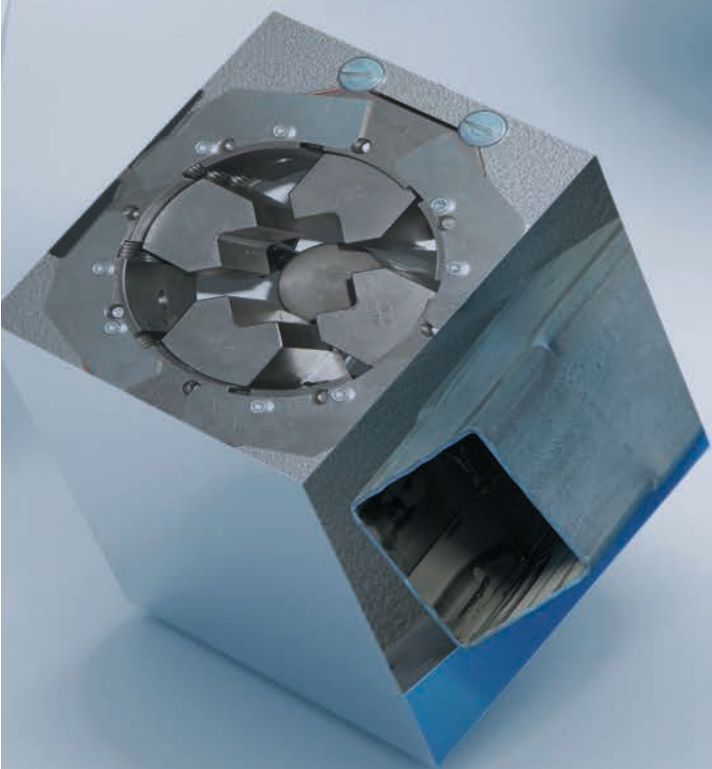
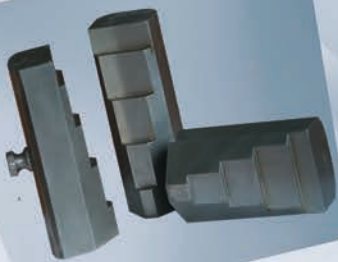
HM 380 | HM 480
HM 660 | HM 1200



HMC 12-2000



ITM 300



The UNIFLEX KS 6, KS 8 and KS 10 are designed for precision crimping and calibration.



KS 6, KS 8, KS 10

High-level components and system solutions

Slide bearing technology

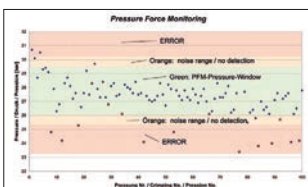
- Grease-free for extra cleanliness and prolonged service life
- Maximised productivity at very low operating costs
- Chips brush off easily, minimising tool wear
- Clean machining area
- Reduces crimping force loss by up to 20%
- High process stability and reproducible accuracy

CE compliant

We reserve the right to make technical changes without notice. Options are machine parts that can only be ordered while buying the machine.

Standard – Pressure Force Monitoring

PFM – Standard on all machines with Control C.2



Quality-enhancing option for series production. With PFM, the upper and lower pressure limits can be set by adjusting the tolerance values obtained from test pressing. Pressures outside these limits are output as errors. It is possible to let the machine switch off at a fixed upper or lower limit, thereby obtaining a higher process safety. This way you can display and record combinations of incorrect hose and fittings, skipped work stage, such as skiving of the hose or a poorly positioned hose-fitting connection. Achieve integrated quality control without any additional effort.

Standard




PS Double foot pedal



KS 6, KS 8, KS 10

Technical data	KS 6	KS 8	KS 10
Crimp force (kN/Ton)	500/50	800/80	1 800/180
No grease: 20% less friction	✓	✓	✓
Control	Control C.2	Control C.2	Control C.2
Max. crimping range	55 mm	139 mm	139 mm
Opening	+ 25 mm	+ 45 mm	+ 45 mm
Opening without dies	95 mm	190 mm	190 mm
Type of dies	PBK 239	PBK 237	PBK 237
Speed (mm/sec)			
Close	12	7	3,5
Crimp	12	7	3,5
Open	30	15	6
Noise level	58 dBA	58 dBA	58 dBA
Drive	5,5 kW 3~VAC	5,5 kW 3~VAC	5,5 kW 3~VAC
Oil	80 L	80 L	80 L
L x W x H (mm)	1 000 x 1 000 x 1 700	1 000 x 1 000 x 1 700	1 000 x 1 000 x 1 700
Weight	470 kg	570 kg	570 kg

Type of dies

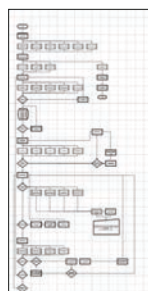
 Ø mm	PBK 239	PBK 237
	-mm-	-mm-
12	3	3
14	3	3
16	4	4
19	4	4
22	4,5	4,5
24	4,5	4,5
26	4,5	4,5
28	4,5	4,5
32	5	5
36	5	5
40	5	5
44	5	5
47	5	5
50		5
54		5
57		5
62		5
67		5
71		5
74		5
78		5
84		5
86		5
90		5
96		5
103		5
106		5

Accessories

Control C.2: Accessories



OC KS6/KS8 MVA



Customized software



Electronic caliper



Calibration mandrel



Barcode scanner

UTS/UDL
Data transferULS
UNIFLEX label system807.2
Screen protector

Press designed specifically for the production of automotive hoses. A good example for such a tailor-made solution is the HMC 1-25, HMC 1-30 and HM 245 with C-shaped crimping tool designed for radial insertion of complex hose lines. This special press is an ergonomically designed, low-noise machine that requires no lubrication. It has been specifically devised for the production of hoses for the automotive industry, offering outstanding press forces and precision. With PFC and other optional features, you can adjust the press force to process materials that are easily damaged, producing strong and lasting connections without any need for gluing, screwing or welding.



HMC 1-25 | HMC 1-30



HMC 245

Innovative design with C-shaped crimping tools

- Compact dies for easy crimping of 90° elbow fittings
- Radial workpiece insertion

High-level components and system solutions

- Quality pumps designed for low-noise operation

Slide bearing technology

- Optimised productivity with minimum maintenance costs
- Reduces crimping force loss by up to 20%
- Grease-free for extra cleanliness and prolonged service life
- No greasy dirt deposits

New Control C user interface

- Touch control screen
- Programmable crimp dimensions and pressure measurement
- Large product memory for efficient production management
- HID compliant

CE compliant

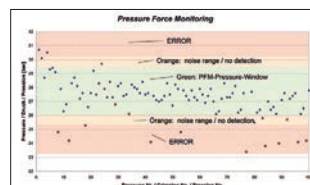
Package

HMC 1-25 | HMC 1-30
 Package = Machine
 + PB Ø 17, 20, 24, 28, 32, 40, 44, 50

HM 245
 Package = Machine
 + PB Ø 17, 20, 24, 28, 32, 40, 44, 50

Standard – Pressure Force Monitoring

PFM – Standard on all machines with Control C.2



Quality-enhancing option for series production. With PFM, the upper and lower pressure limits can be set by adjusting the tolerance values obtained from test pressing. Pressures outside these limits are output as errors. It is possible to let the machine switch off at a fixed upper or lower limit, thereby obtaining a higher process safety. This way you can display and record combinations of incorrect hose and fittings, skipped work stage, such as skiving of the hose or a poorly positioned hose-fitting connection. Achieve integrated quality control without any additional effort.



HMC 1-25 | HMC 1-30

HM 245

Technical data	HMC 1-25	HMC 1-30	HM 245
Crimp force (kN/Ton)	250/25	300/30	750/75
No grease: 20% less friction	✓	✓	✓
Control	Control C.2	Control C.2	Control C.2
SAE R 12* 1 piece fitting			1"
SAE R 12* 2 piece fitting			¾"
Industry	1"	1"	1"
Max. crimping range	70 mm	70 mm	70 mm
Radial opening			75 mm
Opening without dies	90 mm	90 mm	105 mm
Type of dies	239	239	239
Speed (mm/sec)			
Close	30	30	27
Crimp	5	5	5
Open	50	50	30
Noise level	< 80 dBA	< 80 dBA	53 dBA
Drive	4 kW	4 kW	4,0 kW
Oil	100 L	100 L	100 L
L x W x H (mm)	650 x 590 x 1 700	650 x 590 x 1 700	1 020 x 950 x 1 450
Weight	320 kg	320 kg	610 kg

* According to the fitting.

Additional Information



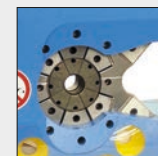
Radial insertion of workpieces, catering even to 90° bends.



Sliding table with handle.



Double head system.



Constant axial centre when crimping jaws are closed.

Type of dies

(HMC 1-15 HMC 1-25 | HMC 1-30)



Ø mm	-mm-
6,8	38
9	38
10	38
12	38
14	38
16	38
17	38
19	38
20	38
22	38
24	38
26	38
28	38
30	38
31	38
32	38
34	38
36	38
38	38
39	38
40	38
44	38
47	38
50	38
54	38
57	38
62	38

Type of dies

(HM 245)



Ø mm	-mm-
6,8	50
9	50
10	50
12	50
14	60
16	60
17	60
19	60
20	60
22	60
24	60
26	75
28	75
30	75
31	75
32	75
34	75
36	75
38	75
39	75
40	75
44	75
47	75
50	75
54	75
57	75
62	75

Accessories

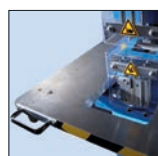
Control C.2: Accessories



PTS Die marking



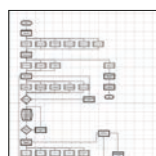
OC HM 3xx/HM 245



Sliding table with handle



DMS



Customized software



Electronic caliper



Calibration mandrel



Barcode scanner



LUF



PS.2 Double foot pedal



UTS/UDL Data transfer



ULS UNIFLEX label system



807.2 Screen protector

Our production crimper models HM 380, HM 480, HM 495, HM 660, HM 665 and HM 1200 are ideal for the crimping of insulators, cables, steel ropes and reinforcing steel elements.



HM 665

High-level components and system solutions

HiLo cylinder - for enhanced power without extra heat/risk of overheating

Compact ergonomic design

Large basic jaws suitable for the crimping of virtually any fitting type

Lateral reinforcement for optimised product quality

Low-noise operation thanks to special pumps

Fixed 6-o'clock die

For force-free and accurate workpiece positioning

Enhanced productivity

Improved workplace safety and less stress for operating personnel

Slide bearing technology

Grease-free for extra cleanliness and prolonged service life

Maximised productivity at very low operating costs

Chips brush off easily, minimising tool wear

Hoses remain grease-free

- Ideal for hoses designed for the food or pharmaceutical industry
- Reduced tool wear

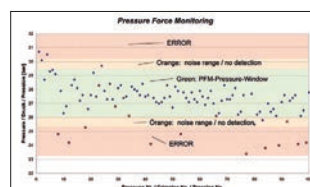
Reduces crimping force loss by up to 20%

High process stability and reproducible accuracy

CE compliant

Standard

PFM – Standard on all machines with Control C.2



Quality-enhancing option for series production. With PFM, the upper and lower pressure limits can be set by adjusting the tolerance values obtained from test pressing.

Pressures outside these limits are output as errors. It is possible to let the machine switch off at a fixed upper or lower limit, thereby obtaining a higher process safety.

This way you can display and record combinations of incorrect hose and fittings, skipped work stage, such as skiving of the hose or a poorly positioned hose-fitting connection. Achieve integrated quality control without any additional effort.



HM 380 | HM 480
HM 660 | HM 1200



(Cooper-) Cable



Rebar fasteners



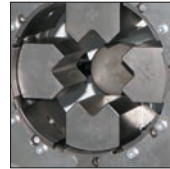
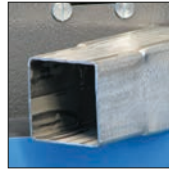
Insulator



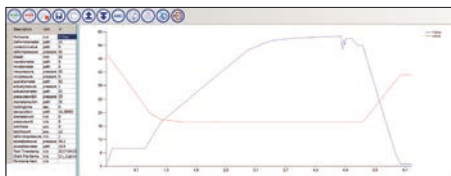
Heater



Aircon hose

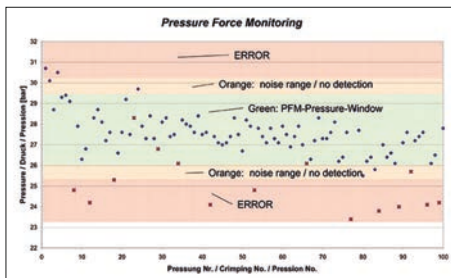


Special dies for forming tubes with square or round ends.



Option: PFC

PFC (Pressure Force Control) makes it possible to crimp pressure-sensitive work pieces, such as fiberglass insulators, resulting in a stable connection that will endure extreme forces. PFC is based on the adjustability of the applied crimp force to take into account the individual material characteristics. This secures the highest quality of your products – without having to glue, screw or weld! It is a special demand for a machine crimping with PFC. To find the ideal crimper for you, please contact your local UNIFLEX salesperson.



Standard: PFM

PFM gives you the option to achieve a substantial quality improvement - for a comparatively small investment of time and money. Here is how it works: After each crimp process with the PFM-Option the reached crimp value is shown. From these measures, the start values for the upper or lower pressure limit can be determined. During each crimp process, the permanently measured crimp value is compared to the entered limits. If this exceeds the set limits, an error message is shown. At the end of the crimp process, it is tested once more if the minimal pressure has been reached. In the case of an error, the operator has the option to check the workpiece thoroughly and to correct any sources of the error. During a detailed examination with the PFM-option, the quality of a production process was increased from 97.8% to 99.7%. The UNIFLEX PFM option revealed that 2% of all produced parts had defects, thus preventing these defective parts from being delivered to customers.



Accessories: UTS/UDL

UTS enables a comfortable article entry via a PC. The data can be entered in a set MS Excel-sheet and be transferred with UTS to the Control C.2. Therefore, it is possible to compare the data from a number of machines, provide documentation and backup in one go. All crimpings can be documented with UTS, especially with the PFM option, which saves the pressure value as an additional parameter.

Accessories

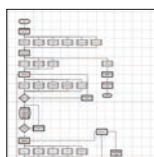
Control C.2: Accessories



PTS Die marking



OC HM 3xx/HM 245



Customized software



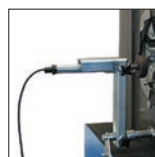
Electronic caliper



Calibration mandrel



Barcode scanner



TA (A) Depth stop



Multistep included with Control C.2



QDS 239 C



LUF



PS.2 Double foot pedal



RFID



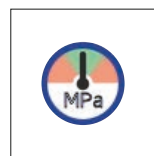
DMS



ULS UNIFLEX label system



807.2 Screen protector

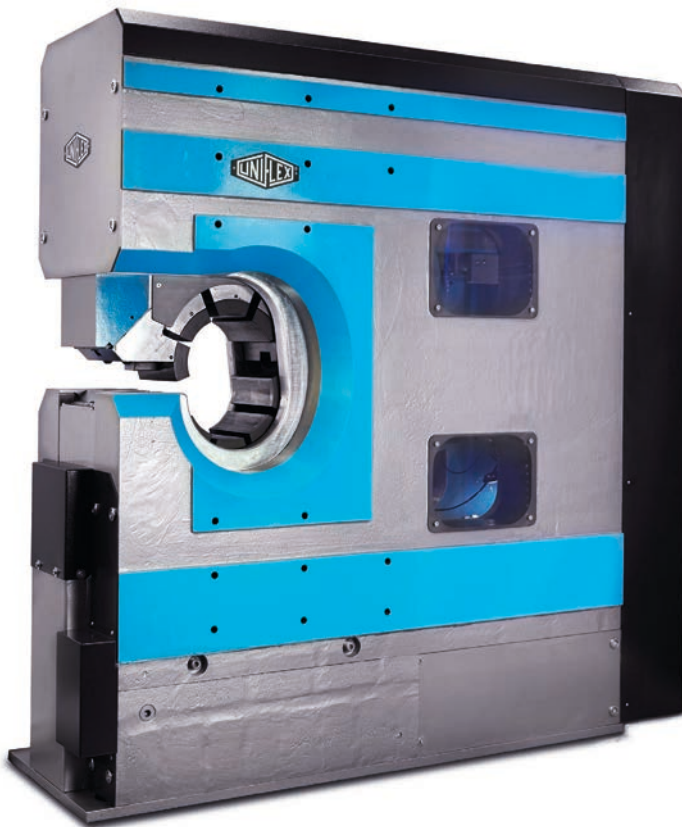


Crimping by Pressure included with Control C.2



Stability, innovation and crimping force characterize the new UNIFLEX HMC 12-2000 crimper.

This machine is not only able to crimp the biggest hoses ever for a UNIFLEX machine, it is also the most compact one for mobile work in UNIFLEX history. The HMC 12-2000 is the most solid built C-crimper of the 2000 ton category due to its integrated powerbooster for high crimping forces. After a long period of research and development in the field of FEM, this machine outshines all others of its category. UNIFLEX defines new crimping techniques and focuses on the highest quality and user-friendliness as well as on advanced materials.



HMC 12-2000

High-level components and system solutions

- HiLo cylinder - for enhanced power without extra heat/risk of overheating
- Compact ergonomic design provides ergonomic work and mobile usage for fixed pieces
- Large basic jaws suitable for the crimping of virtually any fitting type
- Lateral reinforcement for optimised product quality

Patented design

- New FEM calculation used
- Tool can be removed separately
- Stable, innovative
- Low maintenance

Slide bearing technology

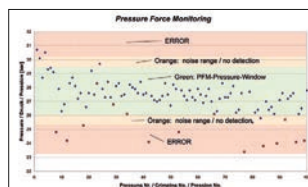
- Grease-free for extra cleanliness and prolonged service life
- Maximised productivity at very low operating costs
- Hoses remain grease-free
 - Ideal for hoses designed for the food or pharmaceutical industry
 - Reduced tool wear
- Reduces crimping force loss by up to 20%
- High process stability and reproducible accuracy

CE compliant

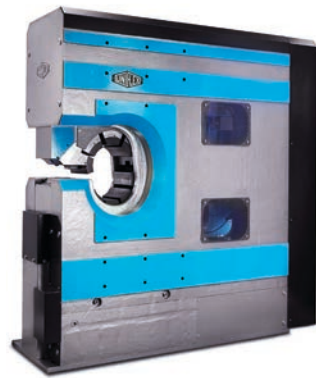
We reserve the right to make technical changes without notice. Options are machine parts that can only be ordered while buying the machine.

Standard

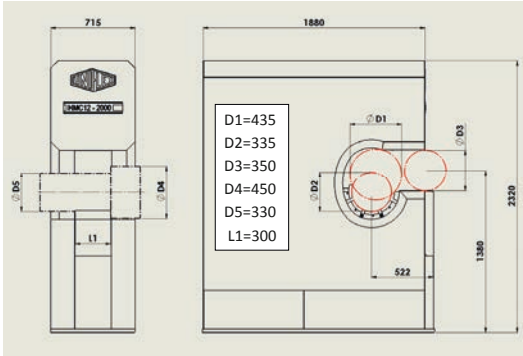
PFM – Standard on all machines with Control C.2



Quality-enhancing option for series production. With PFM, the upper and lower pressure limits can be set by adjusting the tolerance values obtained from test pressing. Pressures outside these limits are output as errors. It is possible to let the machine switch off at a fixed upper or lower limit, thereby obtaining a higher process safety. This way you can display and record combinations of incorrect hose and fittings, skipped work stage, such as skiving of the hose or a poorly positioned hose-fitting connection. Achieve integrated quality control without any additional effort.



HMC 12-2000



Technical data	HMC 12-2000
Crimp force (ton)	20 000/2 000
No grease: 20% less friction	✓
Control	Control C.2
SAE R15 4SH 1 piece	3"
SAE R15 4SH 2 pieces	3"
Industry	12"
90° bow	3"
Max. crimp range (mm) with basic dies	380
Crimping	Ø PB +50
Opening without dies	435 mm
Die type	247, 245, 237
Speed (mm/sec)	upon request,
Close/crimp/open	depends on power unit
L x W x H (mm)	2 000 x 750 x 2 400
Weight of tool (kg)	1 5000

Type of dies

237 L	
Ø mm	-mm-
54	118
57	118
62	118
67	118
71	118
74	118
78	118
84	118
86	118
90	118
96	118
103	118
106	126
111	126
116	126
121	126
126	126
131	126

Type of dies

245	
Ø mm	-mm-
103	130
106	130
111	130
116	130
121	130
126	130
131	130
136	130
146	150
156	150
170	150
185	150
200	150

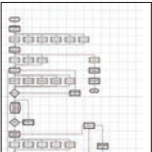
Type of dies

247	
Ø mm	-mm-
96	130
106	130
126	130
131	130
136	130
146	150
156	150
170	170
185	200
200	200
215	200
230	200
245	200
260	200
275	200
290	200
305	200

More technical data
according to the graphic above

- D1 = Max. axial diameter 435 mm
- D3 = Max. radial opening 350 mm
- D4 = Max. flange diameter 450 mm
- D5 = Diameter basic dies 330 mm
- L1 = Wide basic dies 300 mm

Control C.2: Accessories



Customized software



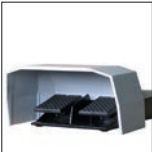
Electronic caliper



Calibration mandrel



Barcode scanner



PS.2 Double foot pedal



Multistep included with Control C.2



DMS



UTS/UDL Data transfer



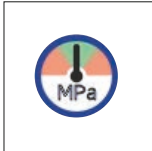
ULS UNIFLEX label system



807.2 Screen protector



RFID



Crimping by Pressure included with Control C.2



The **ITM 300** is a drawing bench designed for the testing of insulators. As safety comes first, insulators must meet stringent safety standards – even under extreme loads. To ensure that they meet these requirements, UNIFLEX has designed a sturdy, special drawing bench for insulator testing.



Swivelling notebook shelf



Designed for easy setup and tooling



ITM 300

Tensile test bench for composite insulator testing

- 3 different test schedules: routine proof testing, failure load test and 96-hour time test
- Silent hydraulic screw pump
- Clamping heads with roller device
- Clamping heads with functional clevis to adapt several insulator connectors
- Buckling resistant base frame; optimized for minimal elasticity
- Modular base frame base element with 2 or 3 windows for visual control extension (optional)
- Cover opening 90° (crane loading possible)
- Height-adjustable insulator shelf

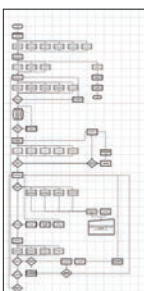
Technical data	ITM 300
Tension force (kN/t)	300/30
Piston stroke	500 mm
Force transfer	Computer-controlled servo-hydraulic
Control	Control C.2 + Touch
Noise emission	53 dBA
Max. insulator diameter	250 mm
Max. testing length with basic unit	540 mm
Additional testing length with extension element	3 000 mm (Accessory)
L x W x H test unit	3 000 x 780 x 1 670
L x W x H aggregate	1 000 x 1 200 x 1 700
Weight of test unit	1 400 kg
Weight of extension element	1 100 kg
Weight of aggregate	230 kg
Notebook shelf	Swivelling mechanism for extra space
Voltages	
ITM 300_MVA 230V-480 V, 50/60 Hz 3 Ph	other ratings available on request

Insulator table with adjustable height
Easy tooling for increased productivity
Requires minimal maintenance
Ergonomic design
Easy tooling for increased productivity
Low-noise hydraulic pump for stress-free working
Insulator table with adjustable height
Siemens industrial colour touch panel
Clear visual display
Large product memory
Programmable product sequences
Network connection
USB interfaces
Safety
CE compliant
Makrolon® safety inspection panel
Safety unit with protective switch/EMERGENCY-STOP device



Control C.2: Accessories

Accessories ITM 300



Customized software



UTS/UDL Data transfer



807.2 Screen protector



Barcode scanner



888.074 Network printer



BCR CtrlC Barcode scanner



701.2200 Extension element 3000 mm



701.050, 701.051, 701.052, 701.053 Fork head connector with bolts (insulators)

We reserve the right to make technical changes without notice. Options are machine parts that can only be ordered while buying the machine.