

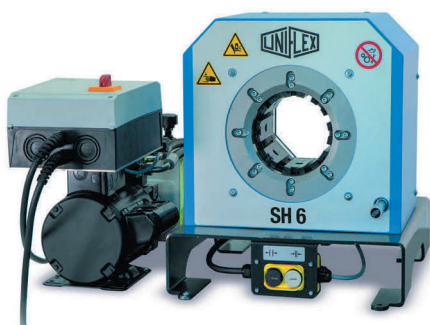


Due to their narrow and innovative construction, high level of user friendliness and long service life, the SH 6 series set new standards for quality and cost effectiveness. Their large opening +43 mm ( + 1.69") and light weight 172 kg make it the perfect machine for mobile application up to 2" 4 SP and 3" return line.

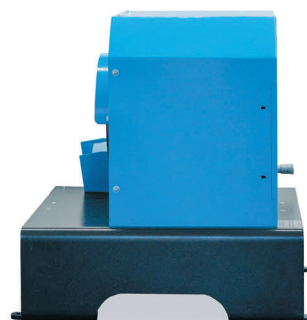
The use of long master dies allows you to crimp 90° elbow fittings up to 2" with the tried and tested greaseless slide bearing technology, which reduces maintenance costs and increases the product quality.



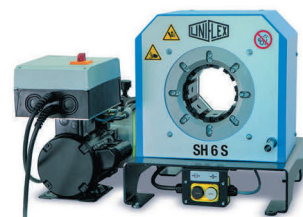
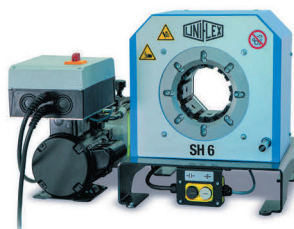
SH 6 Ecoline



SH 6 Mobileline  
(ideal for mobile applications)



SH 6 Mobileline (side view)




SH 6 Ecoline

SH 6 Mobileline

SH 6 S Ecoline

SH 6 S Mobileline

Technical Data	SH 6 Ecoline	SH 6 Mobileline	SH 6 S Ecoline	SH 6 S Mobileline	Type of dies		
Crimp force (kN/Ton)	2,400/240	2,400/240	2,800/280	2,800/280	 <b>239-xx-Ø-yy    266</b>		
No grease: 20% less friction	✓	✓	✓	✓			
Control	Control A	Control A	Control A	Control A	Ø mm	mm	mm
4/6-spiral + 1-pc fittings*	2"	2"	2"	2"	6,8	65	
4-spiral + 2-pc fittings*	2"	2"	2"	2"	9	65	
4/6-spiral + interlock*	1½"	1½"	2"	2"	10	65	
Industry hose	3"	3"	3"	3"	12	65	
90° Elbows	2"	2"	2"	2"	14	65	
Crimp range (mm/inch)	102 / 4.02	102 / 4.02	102 / 4.02	102 / 4.02	16	65	
Opening (mm/inch)	+41 / +1.69	+41 / +1.69	+45 / +1.69	+45 / +1.69	17	65	
Opening without dies (mm/inch)	145 / 5.71	145 / 5.71	145 / 5.71	145 / 5.71	19	65	
Master dies length (mm/inch)	110 / 4.33	110 / 4.33	110 / 4.33	110 / 4.33	20	65	
Type of dies	239 - xx/266 **	239 - xx/266 **	239 - xx/266 **	239 - xx/266 **	22	65	
Press path (mm)	12	12	20	20	24	65	
Speed (mm/sec)					26	65	
Close	30/1.8	10/0.5	30/1.8	10/0.5	28	80	
Crimp	1.8	0.5	1.8	0.5	30	80	
Open	10.6/30	3/30	10.6/30	3/30	31	80	
Noise level	69 dBA	69 dBA	69 dBA	69 dBA	32	80	
Drive	3 kW  3~VAC	1.8 kW  1~VAC (new with double pump)	3 kW  3~VAC	1.8 kW  1~VAC (new with double pump)	34	80	
Oil	35 l	4 l	35 l	4 l	36	80	
L x W x H (mm)	600 x 550 x 750	505 x 430 x 490	709 x 613 x 691	505 x 621 x 573	38	80	
Weight (kg)	196	172	206	182	39	80	
					40	80	
					44	80	
					47	100	
					50	100	
					54	100	
					57***	100	
					62***	100	110
					67		110
					71		110
					74		110
					78		110
					84		110
					86		110
					92		110
					94		110
Options							
12 VDC/24 VDC	–	✓	–	✓			
1 Phase	✓	✓	✓	✓			
Control C.2/IPC	✓	–	✓	–			

\* According to the fitting. \*\* Intermediate dies not required. \*\*\* Not suitable for GDC 239.5. Packages page 28 / Accessories and options page 50

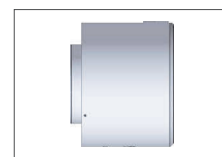
## Description



The 12 VDC/24 VDC units offer space- and weight-saving application options, e.g. for fitting service trucks.



For mobile applications the SH 6 Mobileline is also ideally suitable.



SH = Hollow piston press tool